

A photograph of a tree-lined path at William & Mary, with a teal overlay. The path is paved and leads into the distance, flanked by large, leafy trees. In the background, a building with a tower is visible. The overall tone is serene and academic.

WILLIAM & MARY

Scholarships Impact Fund

2021 ANNUAL REPORT

giving.wm.edu/scholarships

Now more than ever — amid the pandemic and financial hardships families are facing around the globe — scholarships have the power to transform lives.

The students you'll meet in this report offer a small glimpse into the thousands of unique stories about the profound impact of scholarship support throughout the W&M community.

Unrestricted, need-based scholarships are the university's highest priority. Gifts made to the **Scholarships Impact Fund** provide the university with the most flexibility to ensure your investment gets put to immediate use in support of our students' most pressing needs.

Thank you for making a difference in the lives of William & Mary students.

giving.wm.edu/scholarships

A portrait of a young woman with dark hair and glasses, wearing a black dress with a white and red floral pattern and a red belt. She is standing with her hands on her hips against a dark grey background. The entire image is framed by a thin gold border.

Amber Blanton '21

LINGUISTICS
VIRGINIA BEACH, VIRGINIA

“

It is only thanks to the **kindness and generosity of scholarship donors** that a girl who grew up on food stamps with unemployed parents can become an accomplished and educated woman.”



AMBER'S STORY

Raised on SNAP and food stamps with two disabled parents, Amber didn't see college as an option. Luckily generous scholarship support granted her an opportunity she never thought she could afford.

"As a first-generation student, I didn't have role models or guidance at home about attending college," says Amber, who is from Virginia Beach. "Everyone on campus seemed like they knew what they were doing and I felt like a fish out of water. I struggled with confidence and had a hard time relating to other students."

Never a fan of complacency, Amber wanted to help herself and others like her. In 2019, she was one of the founders of **William & Mary's First-Generation, Low Income (FGLI) support group**.

"It is a network and resource hub to help students develop strategies to deal with the anxiety of being a first-generation student," says Amber. "I made some great friends through it and we have each other's backs."

In FGLI, Amber found the community she hoped for at William & Mary. Over the years, she has become more

comfortable with herself and her past, and she now looks forward to the future.

"I have always known I was going to study linguistics since I first heard my mom speak her native Hawaiian Creole English," says Amber, who plans to pursue a master's degree in language documentation. "I hope to help small, local communities to archive their own languages/dialects so later generations can reconnect with their history."

Amber says that one of the biggest lessons she has learned at W&M is to always try a little harder.

"Just having the ability to try is so valuable and that's what scholarship support gave me," says Amber. "My biggest fear in life is to raise kids in the same level of poverty as I experienced, and scholarship support assists me in making my worst fear ever farther from reality. **From the bottom of my heart, I want to give a million thanks.**"

DURING THE *FOR THE BOLD* CAMPAIGN:

\$135 Million

total raised in gifts and pledges for undergraduate scholarships,
with nearly \$5.8 million contributed to the Scholarships Impact Fund

102%

INCREASE IN THE
NUMBER OF ANNUAL DONORS
TO ALL SCHOLARSHIPS

MORE THAN

\$61.7M

WAS AWARDED IN
UNDERGRADUATE SCHOLARSHIPS

9x

INCREASE IN THE NUMBER
OF ANNUAL DONORS TO THE
SCHOLARSHIPS IMPACT FUND

A portrait of Luis de los Santos '22, a young man with curly brown hair, a beard, and glasses, wearing a grey sweater over a teal shirt. He is standing with his arms crossed against a dark grey background.

Luis de los Santos '22

PSYCHOLOGY AND COMPUTER SCIENCE
ASHBURN, VIRGINIA

“

When I found out about my scholarship, my parents cried. As a first-generation American college student, I am able to experience some of the finest education available with some of the best opportunities around; all the while not having to worry about the crippling debt. **Without your help, I could not even imagine where I would be.”**

MORE THAN

830

STUDENTS RECEIVED
SCHOLARSHIP SUPPORT FROM
PRIVATE GIVING LAST YEAR



Emily Hays '19 firmly believes that her experience at William & Mary gave her a leg up on starting her career. Since graduating less than two years ago, she is already working toward her dream conservation career with positions at the World Wildlife Fund and The Nature Conservancy.

"I have definitely found that people in Washington, D.C., know and recognize what a W&M degree means," says Emily, who is originally from Cambridge, MA. "Because of the experiences I had at W&M, I have strong communication skills and the confidence to pursue work opportunities and my career goals."

For Emily, these opportunities would not have been possible without scholarship support.

"Scholarship support gave me the freedom to explore everything W&M has to offer and take classes that interested me rather than needing to pursue a direct career path," says Emily, who majored in psychology with an environmental science and policy minor. "I was able to follow my passions without being tied to the stress of student loans. I had room to fail and room to learn."

Emily was able to study abroad in Italy and Mexico thanks to the scholarship support she received, and participated in two internships with William &

Mary's Global Research Institute. She was also active on campus with her sorority and worked as a Wren Ringer to support W&M's fundraising efforts.

"I'm very thankful for the support I received and I recognize the impact giving even a small amount can have," says Emily. "Every dollar counts and I target my giving toward what I think will make the biggest difference for students on campus."

Emily started giving back by donating her senior class gift to the Scholarships Impact Fund. Since then, she has given to the Lemon Project and the Global Research Institute as well as several other areas at W&M that are important to her.

"Scholarships have such a positive impact for students like me who are looking to create opportunities for themselves," says Emily. "With so much on hold right now, I feel so lucky to be where I am. I'm grateful to be doing important conservation work that will help with future pandemics and keep people and the environment healthy for generations to come."

A portrait of a young man with dark hair and a beard, wearing a white shirt and a dark jacket, looking directly at the camera.

Abdurrahim (Ben) Sevim '20

INTERNATIONAL RELATIONS
ISTANBUL, TURKEY

“

Every moment of my academic life at William & Mary made me feel like the luckiest student. I grew up in Turkey, and W&M has enabled me to gain a stronger, more robust and more diverse perspective of the world. William & Mary is my family. **The scholarship enabled me to push limits to reach goals that I could not see even in my dreams.”**

MORE THAN
\$1M

CONTRIBUTED TO THE
SCHOLARSHIPS IMPACT FUND IN FY20

\$9,000

MEDIAN SCHOLARSHIPS
IMPACT FUND SUPPORT PROVIDED
TO STUDENTS IN FY20

Scholarships Impact Fund

BY THE NUMBERS

DONORS

1,395

TOTAL DONORS IN FY20

\$50

MEDIAN GIFT GIVEN

STUDENTS

48.4%

STUDENTS ENROLLED
AS FRESHMEN

32.3%

FIRST-GENERATION
COLLEGE STUDENTS

54.8%

PELL GRANT ELIGIBLE
STUDENTS

19.4%

STUDENT TRANSFERS FROM
COMMUNITY COLLEGE
OR ANOTHER FOUR-YEAR
INSTITUTION

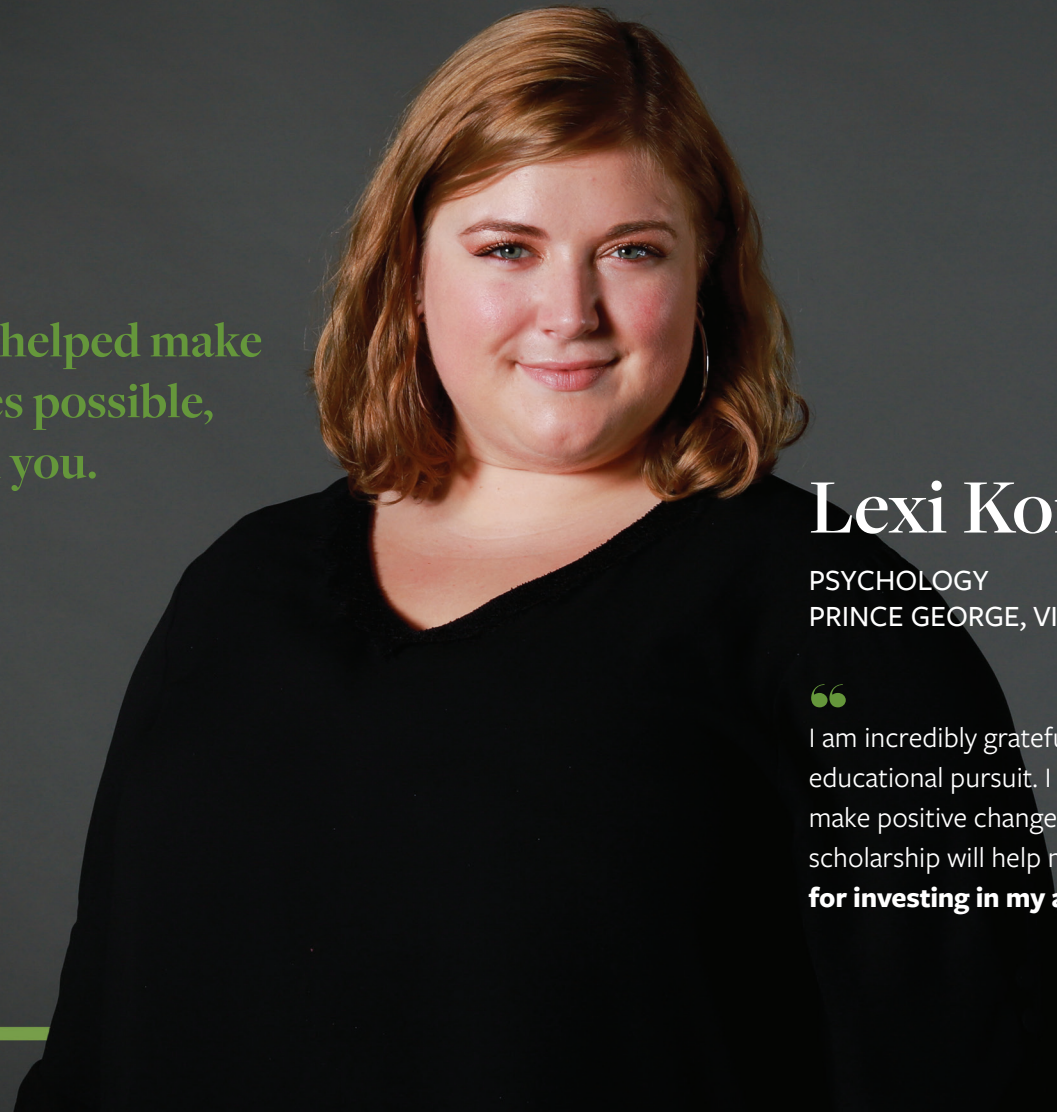
53%

RANKED IN THE TOP 10%
OF THEIR CLASS

3.92

AVERAGE HIGH SCHOOL
GPA OF ENROLLED
FRESHMEN

Your support helped make
these stories possible,
thank you.



Lexi Korkos '22

PSYCHOLOGY
PRINCE GEORGE, VIRGINIA

“

I am incredibly grateful for your generosity and support in my educational pursuit. I plan to work at a local middle school to make positive changes within my community. Receiving this scholarship will help me make that dream a reality. **Thank you for investing in my ability to succeed and thrive.**”

Please help us create more incredible stories of lives forever changed through scholarship support.

Gifts of all sizes to the Scholarships Impact Fund are welcome and all donors will receive special updates on student recipients, including an annual Scholarships Impact Fund report highlighting the progress of our fundraising efforts.

Donors who have given \$2,000 or more to the Scholarships Impact Fund will be invited to meet some of William & Mary's remarkable scholarship recipients at virtual and in-person events throughout the year.

For more information about scholarships, please contact:

Suzie Armstrong, Senior Director of Development for Scholarships and Special Projects, smarmstrong@wm.edu

WILLIAM & MARY

giving.wm.edu/scholarships